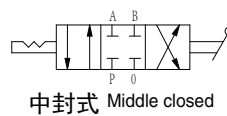
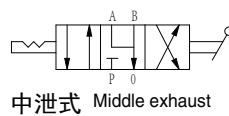
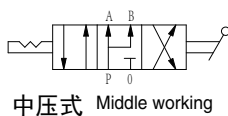


QR8系列手动转阀

Series manual valve



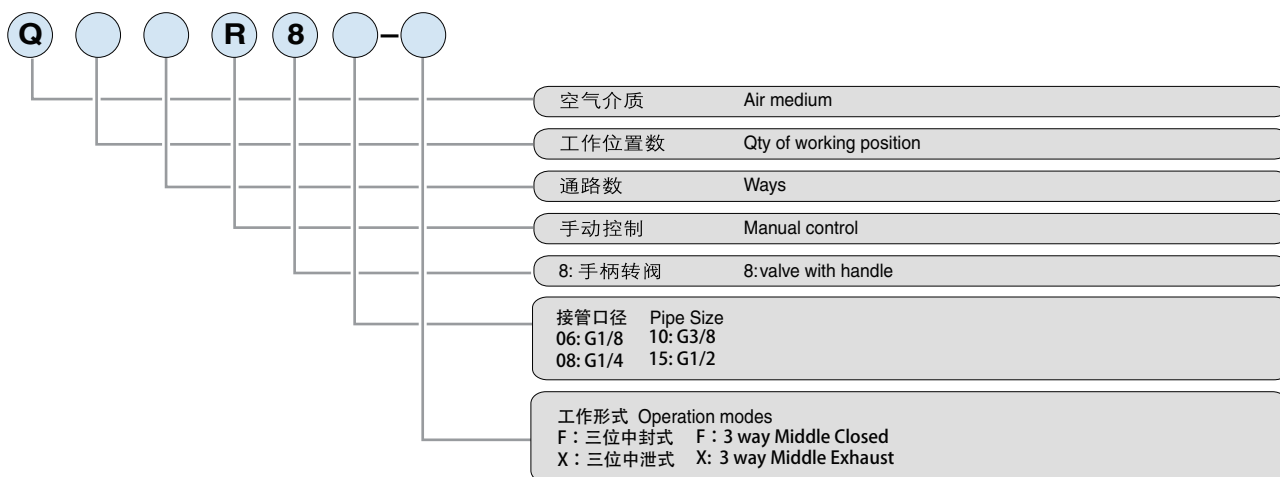
图形符号 symbols



产品特点 Features

- 安装灵活、可直接安装在线上，也可安装在控制的面板上
- 易损件少、耐磨，使用寿命长
- 各种规格都有侧接式(接口螺纹在侧面)和底接式(接口螺纹在底面)两种以供用户选用
- Flexible installation, either fitted directly in the line or on the control panel.
- Few consumables, long durability and long working life.
- Line Mounting (connection threads on the side) and buse mounting (connection threads in the bottom) are available as per client's request

型号注释 Order Code



技术参数 Specification

规格 Specification	Q34R8-06	Q34R8-08	Q34R8-10	Q34R8-15	Q34R8-20
接管螺纹 Size of port	G1/8	G1/4	G3/8	G1/2	G3/4
工作介质 Working medium	经净化的压缩空气 Cleaned compressed air				
压力范围 Pressure range (MPa)	0- 1.0				
耐压 Max. pressure (MPa)	1.5				
使用温度 Working temperature (°C)	-5-50				
最大转动角度 Max angle of turning(°C)	90				
有效截面积S值 Effective sectional area S value(mm ²)	15	17	50	55	55